

Westminster Presbyterian Church

Phone: (360) 357-5750

1925 Boulevard Road SE

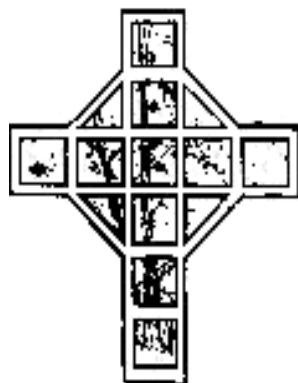
Olympia WA 98501

E-mail: [office@wpcoly.org](mailto:office@wpcoly.org)

Website: [www.wpcoly.org](http://www.wpcoly.org)

# *The Triangle*

*December 15<sup>th</sup>, 2009*



## CURRENT WORSHIP SCHEDULE

At 7:00pm on December 20, 21, 22 and 23 we will have a short vesper prayer service. The service will be a time of contemplation, song and prayer.

Christmas Eve, December 24<sup>th</sup> we will have candlelight services at 5:30, 8:00 and 11:00pm. The 11:00pm service will include communion. There will be childcare at the 5:30pm service only.



Sunday, December 27<sup>th</sup>, worship at 10:00am

Sunday, January 3<sup>rd</sup>, worship at 10:00am and we will celebrate Holy Communion and receive our monthly Food Bank offering.

Sunday School will resume January 10<sup>th</sup>.

**PASTORS' CORNER**  
**The Rev. Dr. David R. Kegley**

As you may know I look forward to the Winter Solstice of December 21, after which I can assure myself the days are getting longer. Usually I'm so concerned

about getting through the season of long nights that I don't notice the gifts they contain.

While it is true that we are creatures who awaken, eat, talk, and work, mostly during the daylight hours, we would be half ourselves if it weren't for the darkness. Our physical and emotional rhythms are metered by the modulation of darkness to light. The same is true on a spiritual level. We were meant in some way to hold darkness as well as light. Those well versed in Biblical studies will at this time be translating "darkness" to "death" for the language of the Bible often equates the two. Thus, Paul's words in 2 Corinthians 4, say: "<sup>8</sup> *We are afflicted in every way, but not crushed; perplexed, but not driven to despair; <sup>9</sup> persecuted, but not forsaken; struck down, but not destroyed; <sup>10</sup> always carrying in the body the death of Jesus, so that the life of Jesus may also be made visible in our bodies.*" We hold both the dark times of Jesus' life as well as the light.

Life as it is in this world is meant to be lived to its fullest, which means that we integrate our sufferings with our bright summer days; our dark winter nights with our joys. The two work together so that we can be complete.

When left to my more immature devices, I tend to ignore, overlook, or completely deny my darker days. Sometimes I'm scarcely aware that I have ever suffered anything, but am fully aware of the lightness of springtime. Other people are so immersed in darkness that one wonders if they ever recognize the Easter mornings that often come their way. Some know Easter without Good Friday, while others know only the darkness of Good Friday as though it were frozen in time. When coaxed to appreciate suffering ("carrying in the body the death of Jesus") and the darker days of late December, our hearts become a fertile place for healing, contrition, stillness, compassion, silence, listening and completeness. There is a quiet beauty to the short days. Also there is a restorative, healing quality of the long night—this I am learning. What is sight without contrasts of darkness and light? Our consciousness of sorrow allows joy to be recognized.

May our contemplation of the darkness of December 21 ("carrying in the body the death of Jesus") prepare us for the birth of December 25<sup>th</sup> ("so that the life of Jesus may also be made visible in our bodies").

Peace, *David*

## Calendar for This Week and More

**FRIDAY, DECEMBER 18**

4:00pm G. Delicious Christmas  
Party at Merrill Gardens

**SATURDAY, DECEMBER 19**

7:00pm Youth Lock-In

**SUNDAY, DECEMBER 20**

We will receive the Christmas  
Joy Offering

9:00am Worship

10:15am Groundbreaking  
Ceremony

11:15am Worship

7:00pm Vespers Service

**MONDAY, DECEMBER 21**

5:30pm Bell Choir rehearsal

7:00pm Vespers Service

7:00pm Rachel Circle

**TUESDAY, DECEMBER 22**

7:30am Men's Breakfast @ I-HOP

7:00pm Vespers Service

7:30pm Music Rehearsal

**WEDNESDAY, DECEMBER 23**

10:00am Bible Study (room 12)

7:00pm Vespers Service

**THURSDAY, DECEMBER 24**

Christmas Eve Candlelight services  
5:30, 8:00 & 11:00pm (front page)

**FRIDAY, DECEMBER 25**

Christmas Day (office closed)

**SUNDAY, DECEMBER 27**

10:00am Worship

**MONDAY, DECEMBER 28**

4:00pm Presbytery Trustees (lib)

**TUESDAY, DECEMBER 29**

7:30am Men's Breakfast @ I-HOP

**WEDNESDAY, DECEMBER 30**

10:00am Bible Study (room 12)

**FRIDAY, JANUARY 1**

New Years Day (office closed)

**SUNDAY, JANUARY 3**

10:00am Worship

**MONDAY, JANUARY 4**

12 noon Triangle articles due

**TUESDAY, JANUARY 5**

7:30am Men's Breakfast @ I-HOP

10:30am PW Board (library)

**WEDNESDAY, JANUARY 6**

9:30am Triangle folding (library)

10:00am Bible Study (room 12)

7:00pm S&F Budget meeting



## FROM OUR DIRECTOR OF FAMILY MINISTRIES . . .

Thank you for another wonderful Christmas performance. Everyone did a great job. A special thank you to: Randy Kinnamon - Piano, Bridget Long and Matthew Burkhart - Backdrop, Greg and Matthew Burkhart - Video, Parents and Sunday School Teachers, Donna Burkhart - Script and of course the Children and Youth of Westminster.

Don't forget the Christmas Eve Services at 5:30pm, 8:00pm and 11:00pm. Childcare will be provided for the 5:30pm service only. I hope to see you there!

- ❖ Dates to remember: December 20<sup>th</sup>, 27<sup>th</sup> and January 3<sup>rd</sup> there will be no Sunday School. We will resume Sunday School on Sunday January 10<sup>th</sup>.

*Cheryl Kinnamon*

## ADULT EDUCATION CLASSES BEGINNING IN JANUARY

New and continuing adult education classes will begin in January. There will be an information brochure in your bulletin this week and extra brochures will be in the literature racks the following weeks. This includes classes on Sunday morning and TuesdayNightTogether which resumes February 9<sup>th</sup>.

## MARRIAGE RETREAT AT CANNON BEACH

Register now for Westminster's Marriage Retreat in beautiful Cannon Beach, Oregon on March 19-21, 2010. On Sunday, December 20th look for an informational table set up in the narthex that will have brochures with more information. Registrations forms are included in the brochures. The cost for the retreat is \$275 which includes: 2 overnights in private room with bath, 2 breakfasts and 1 dinner. Many rooms overlook the ocean. To register, complete the registration form and attach payment of either the full amount or a deposit of \$75.00 to reserve your place. If making a deposit, the balance is due February 14th. Start planning now. It will be the perfect time to celebrate and strengthen your relationship and a great opportunity for fellowship.

*Rachelle Dudley and Pastor Christine Long*  
Marriage Retreat Coordinators

# **FELLOWSHIP HALL GROUNDBREAKING CEREMONY!**

**Sunday, December 20<sup>th</sup> at 10:15am**

**The Fellowship Hall Steering Committee and the Fellowship Hall Fundraising Committee are excited to announce our Groundbreaking Ceremony will be held in front of the church this coming Sunday, December 20<sup>th</sup> at 10:15am, between services in anticipation of actual construction starting soon.**

**While we are still working diligently toward reaching an understanding with the City to satisfy conditions that will need to be met before the City is willing to issue us our building permits to get started, we remain hopeful and prayerful that a breakthrough will soon be reached. We ask for all of your prayers that this might happen soon.**

**Please plan on attending these long awaited festivities! We are finally going to make it happen.**

**Your Fellowship Hall Steering Committee and  
the Fellowship Hall Fundraising Committee**

## **FELLOWSHIP HALL/EARLY LEARNING CENTER LINES OF COMMUNICATION**

We have many people to thank who are working on this project: *Jim Morgan*, chair of the Fellowship Hall Steering Committee; *Dave Ammons*, vice chair; *Frank Sanborn*, site manager and liaison to the City permit process; *Marv Ryser* and *Linda Greenly*, co-facilitators of the FHFC; *Ernie Petermann* and *Mike Ardington*, chairs of Buildings & Grounds; *Ron Stoker* and *Carl Harris*, chairs of the Stewardship Sub-Committee. If you have any questions, following are the people to contact:

About the Hearings Examiner	Frank Sanborn and City
About the Fellowship Hall Finance Committee (FHFC)	Marv Ryser, Linda Greenly and Jay Williams
Maintenance and upgrade of our facilities	Ernie Petermann and Mike Ardington
Our ability to use the kitchen while under construction	Ernie Petermann and Mike Ardington
Stewardship	Ron Stoker and Carl Harris
About your part	Pray and as you are led contact the appropriate people
Facility use	Frank Sanborn, Ernie Petermann and Mike Ardington
The status of your pledge to the Fellowship Hall	Lynne Taylor
Updating the website	Jennifer Shaw

**Please keep this list handy for your use at home.**

## INFORMATION ABOUT YOUR END-OF-YEAR OFFERING

This is a reminder that if you want offering credited to 2009 it must be in the church office by December 31<sup>st</sup> or, if mailed, the envelopes must be postmarked by December 31<sup>st</sup>. Otherwise your donation will be credited to 2010. All offering that comes in the offering plate December 27<sup>th</sup> will be credited to 2009.

Your 2010 offering envelopes will be available in the narthex to be picked up Sunday, January 3<sup>rd</sup>. If you received monthly envelopes last year or called and requested them recently, you are on our list. If you are not on that list and wish to be, please contact us soon. We can't change after the envelopes are prepared. Please call me if you have any questions.

*Lynne Taylor, 357-5750, Church Financial Secretary*

## 2010 STEPHEN MINISTRY TRAINING CLASS STARTING



The next Stephen Ministry Training class is planned to start Tuesday, January 19<sup>th</sup>. The 50 hours of training cover topics such as listening, feelings, dealing with depression, ministering to those experiencing grief, prayer and several others. If you would like to consider taking this training, you need to respond now, by picking up an application form, filling it out and returning it back to me or the church office as soon as possible. This is necessary so that we can start reviewing each application, conduct interviews and have a firm count of the number of people who are committed to attend before December 20<sup>th</sup>, which is the deadline. This is not like a normal Sunday school education class that you can just go and attend. It will require a six-month commitment on your part, and we don't ask that lightly. In return, for members of our congregation, the training material costs are covered through our Stephen Ministry budget. I encourage you to contact me, Joan Schlect, Pastor David, or Pastor Christine even if you just want to talk or ask questions about the training program. I or one of your Stephen Leaders will be at a table in the narthex for this Sundays.

Stephen Ministry is like most ministries of the church in that one person can make a big difference. Stephen Ministry training is NOT just for people who might sense a call on their lives to become Stephen Ministers. After having been a part of Stephen Ministry myself for the past 12 years, I am convinced that it is excellent training for all of us. It can help you to communicate better with relatives, neighbors, even with your spouse. At the very least it will help you to understand more fully your relationship with God, and just maybe God's call upon your life. Trust God for what it will bring to your life.

*Dick Petermann, 956-3438, for Stephen Ministry*

## FOR AND ABOUT OUR CHURCH FAMILY . . .

A very **special thank you** to Sunny Petermann who brought communion to Malcolm and me on Sunday, December 6<sup>th</sup>. Sunny also delivered the fantastic fruit basket from the deacons. Malcolm, Liz and I all enjoyed the fruit.

*Mary Droege*

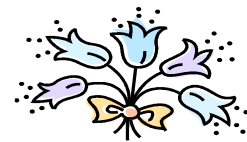
**Thank you** for the prayers and calls. My surgery at Madigan on December 3<sup>rd</sup> went fine and I am now sporting a big splint.

*Dorris Hensel*

**Many thanks** to all the wonderful people who rang the Salvation Army Bell December 8<sup>th</sup> – 10<sup>th</sup>. They were: *Frances & Emily Elstrott, Bill Gillis, Carol & Scott Vannerson, Phyllis Booth, Charla Currier, Jim & Phyllis Ryan, Caren Rose, Paul Taylor, Dave & Lillian Clark, Tom & Elsa McLain, Sid & Vicky Wyrick, Connie Robinson, Tom & Suzanne Fell and Don Johnson.* Thank you so much for making this such a rewarding and successful Christmas project.

*Debra Haynie*

**Our prayers and sympathy** to the family and friends of Cloe Johnston. Cloe died Friday, December 11, 2009. Cloe had been a member of Westminster since 1989. Her service will be at 11:00am December 22<sup>nd</sup> at Mills & Mills in Tumwater.



A reminder that the next unit “Testimony” for the **Catalyst Class begins Sunday, January 10<sup>th</sup>**. If you have not been attending, you are welcome to join the class at this time.

**A New Member Class will be offered Saturday, February 20<sup>th</sup> beginning at 9:30am. If your name is not on our list and you are interested in this class, please contact the church office or indicate your interest on the back of your friendship card at worship. The class goes until about 2:30pm and lunch is provided.**

**TuesdayNightTogether** begins again Tuesday, February 9<sup>th</sup>. We meet at 6:00pm for a light supper. The supper is followed by adult education classes, Youth Group, Kid’s Club and a Craft Group. Watch for brochures describing TNT adult classes as well as Sunday morning classes for the winter quarter in the literature racks. Everyone is encouraged and welcome to join us!

## **“THESE DAYS” DEVOTIONALS**

Although Westminster Presbyterian Church has discontinued its subscription to "These Days" devotional booklets, the publisher inadvertently sent us copies of the edition for January-March 2010. Rather than returning them as we offered, the publisher has donated them to us; and they will be available, in the literature racks, for members and friends. You will find a literature rack in the narthex near the library and one outside the church offices.

*Tom Rolfs, Fellowship & Outreach Department*

### **WORSHIP ATTENDANCE:**

**December 6 – 242 (64 at 9:00am)**

**December 13 – 223 (63 at 9:00am)**

### **GREETERS FOR DECEMBER:**

*Dave and Lillian Clark*



**Pastor: David Kegley**  
**dkegley@wpcoly.org**

**Associate Pastor: Christine Long**  
**ctlong@wpcoly.org**

**Director of Music Ministries:**  
**Terry Shaw, wpcmusic@msn.com**

**Director of Family Ministries:**  
**Cheryl Kinnamon, ckinnamon@wpcoly.org**

**Youth Ministry Coordinator:**  
**Katrina Wyman, K8emay@hotmail.com**

**THE TRIANGLE is published the 1st and 3rd Tuesday of each month.  
The next Triangle article deadline is Monday, January 4<sup>th</sup> before noon.**

**Editor: Carol Ryser (360) 357-5750 office@wpcoly.org**  
**Secretary: Lynne Taylor ltaylor@wpcoly.org**

**CHURCH OFFICE HOURS:**  
**Monday - Friday, 9:00am-noon & 1:00-3:00pm**

**WESTMINSTER'S WEBSITE: www.wpcoly.org**  
**Webmaster: Jennifer Shaw (operagirl79@msn.com)**